



USING INFORM

TO ASSESS CRISIS AND
DISASTER RISK WITHIN A
COUNTRY OR REGION

Guidance Note



European Union
Civil Protection and
Humanitarian Aid



*Empowered lives.
Resilient nations.*

INTRODUCTION TO INFORM SUBNATIONAL

INFORM is an open source risk assessment methodology for humanitarian crises and disasters. An INFORM Subnational risk index shows a detailed picture of risk and its components that is comparable across a single region or country. It can be used by decision-makers to analyse and visualise risk. The model can support decisions on crisis and disaster response, preparedness, and resilience, as well as sustainable development.

The INFORM initiative already publishes a global INFORM risk index, which consists of a risk assessment for 191 countries at the national level. An INFORM Subnational model uses the same risk assessment methodology and development process, but is adapted to regional or national level. The result is a risk model for humanitarian crises and disasters that has the same features and benefits as the global model, but is subnational (province, municipality, village) in resolution.

Developing an INFORM Subnational model is a locally owned and managed, cost-effective process that is supported by the global INFORM initiative – a collaboration of humanitarian, development, government and technical partners. This ensures that each model has local buy-in, is used in local analysis and decision-making processes and is adapted according to local risks, but can draw on global resources and expertise and is validated according to global standards and best practice.

A key feature of INFORM is that it is developed collaboratively, resulting in an open, shared analysis of risk that can be used by many organisations. This is intended to help ensure that collective actions and resources that address crisis and disaster risk are better aligned with the location and nature of the risks themselves.

The purpose of this document is to provide a brief introduction to the INFORM Subnational process for decision-makers. It covers:

- How an INFORM Subnational model works and how you can use it
- An introduction to the development process, including roles and responsibilities
- The support available and the required resources.

This document is designed to provide an introduction and to help you decide if INFORM Subnational can support your analysis and planning.

Detailed, technical guidance is also available on the INFORM website.

www.inform-index.org

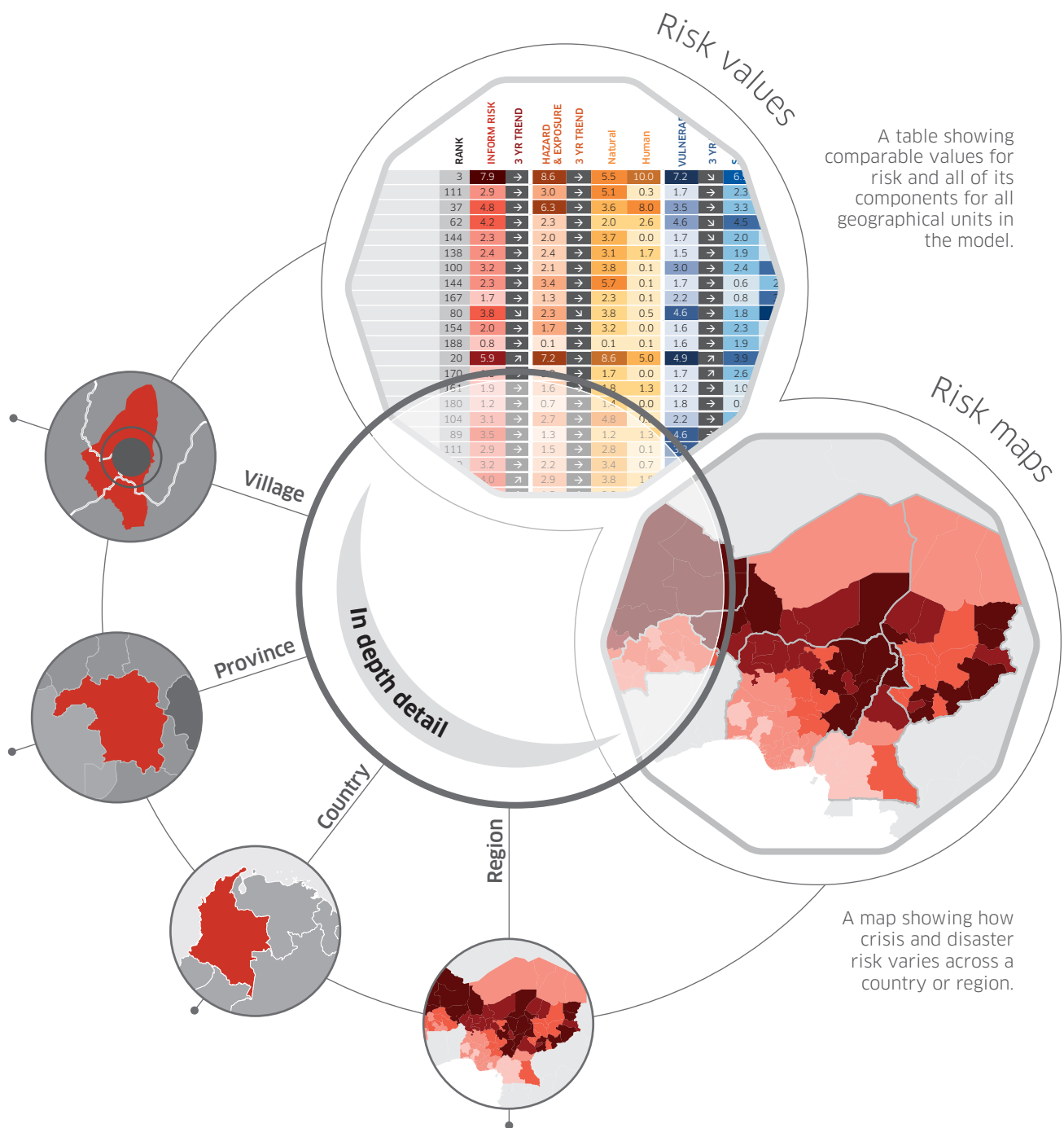


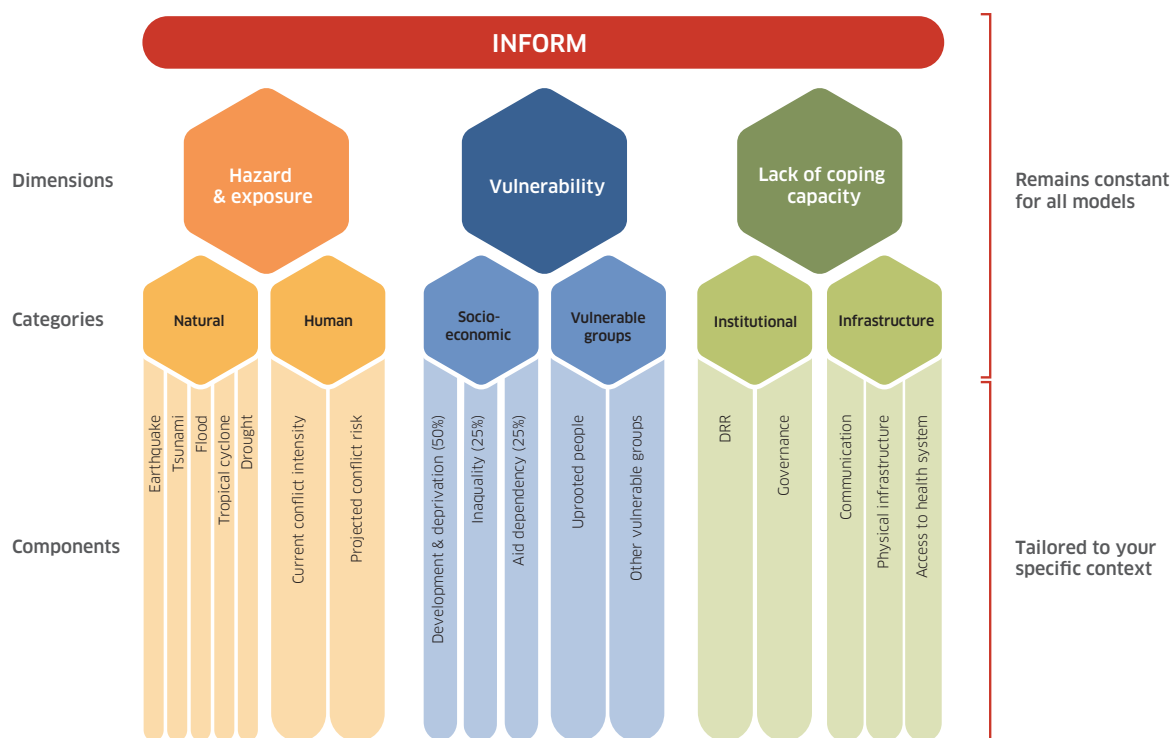
FIGURE 1
Example of the results of an
INFORM Subnational model

HOW INFORM SUBNATIONAL WORKS

Like the global version of INFORM, an INFORM Subnational model combines and simplifies a lot of information about crisis and disaster risk using a composite risk index. It includes data on hazards and exposure, vulnerability and coping capacity and allows you to compare the level of risk and all of its components across a region or country. It is also possible to track risk trends using an INFORM model once you have multiple years of data. The geographical resolution of the model will vary depending on data availability, but it is at least Admin Level 1 (province) and can be higher (municipality, village).

The development process for an INFORM Subnational model is a consultative process. The development phase will determine the specific components of risk relevant to your local context and practical needs, and identify available data to measure those risks.

FIGURE 2
INFORM
conceptual
framework



USING INFORM SUBNATIONAL



An INFORM Subnational model can be used to analyse and compare risk and its components across a region or country. This can help you identify at-risk areas and determine the major driving factors of risk, which can help you decide how to manage it. The results of INFORM are therefore a valuable input into any analysis that will support planning or resource allocation processes. Because the development of INFORM is collaborative and the results are open, it is particularly useful in supporting any decision-making process that involves a wide range or large number of actors, for example strategic humanitarian, development or government planning.

For example, an INFORM Subnational can provide:

- A quantitative contribution to national government or intergovernmental risk assessment and development planning, which takes into account all major risks and sectors.
- A means to integrate crisis and disaster risk management into existing government, humanitarian, development, DRR and preparedness planning processes.

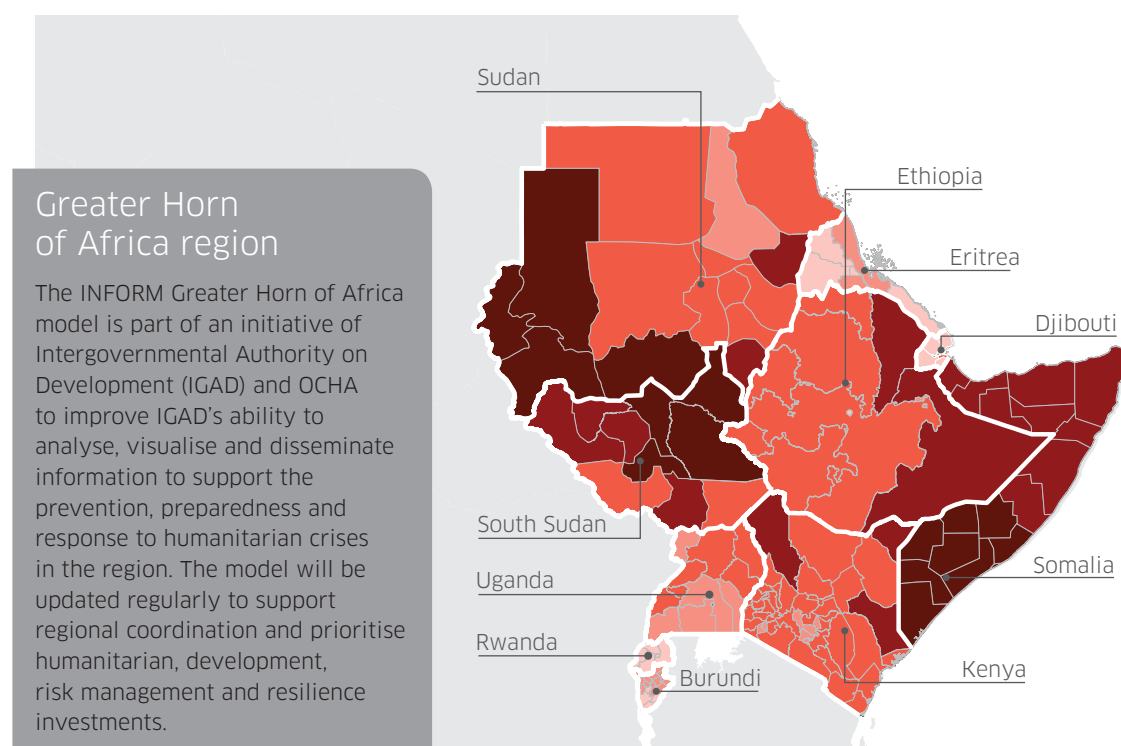
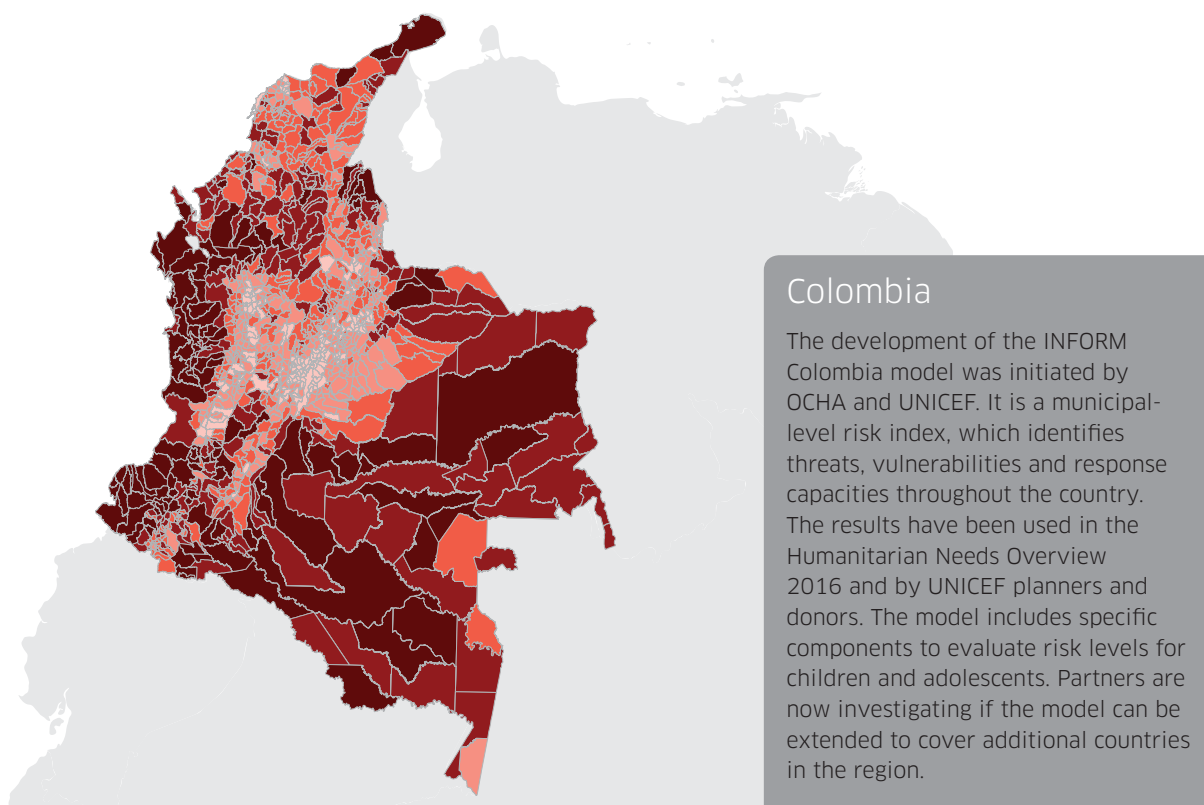
- A process for developing a shared analysis of crisis and disaster risk among government entities, humanitarian and development organisations and donors to ensure their collective actions are better aligned to reduce and manage risk.
- Quantitative analysis validated to global standards that can support the Common Country Assessment, United Nations Development Assistance Framework, Humanitarian Program Cycle, implementation of the Sendai Framework for Disaster Risk Reduction, Resilient Systems Analysis etc.

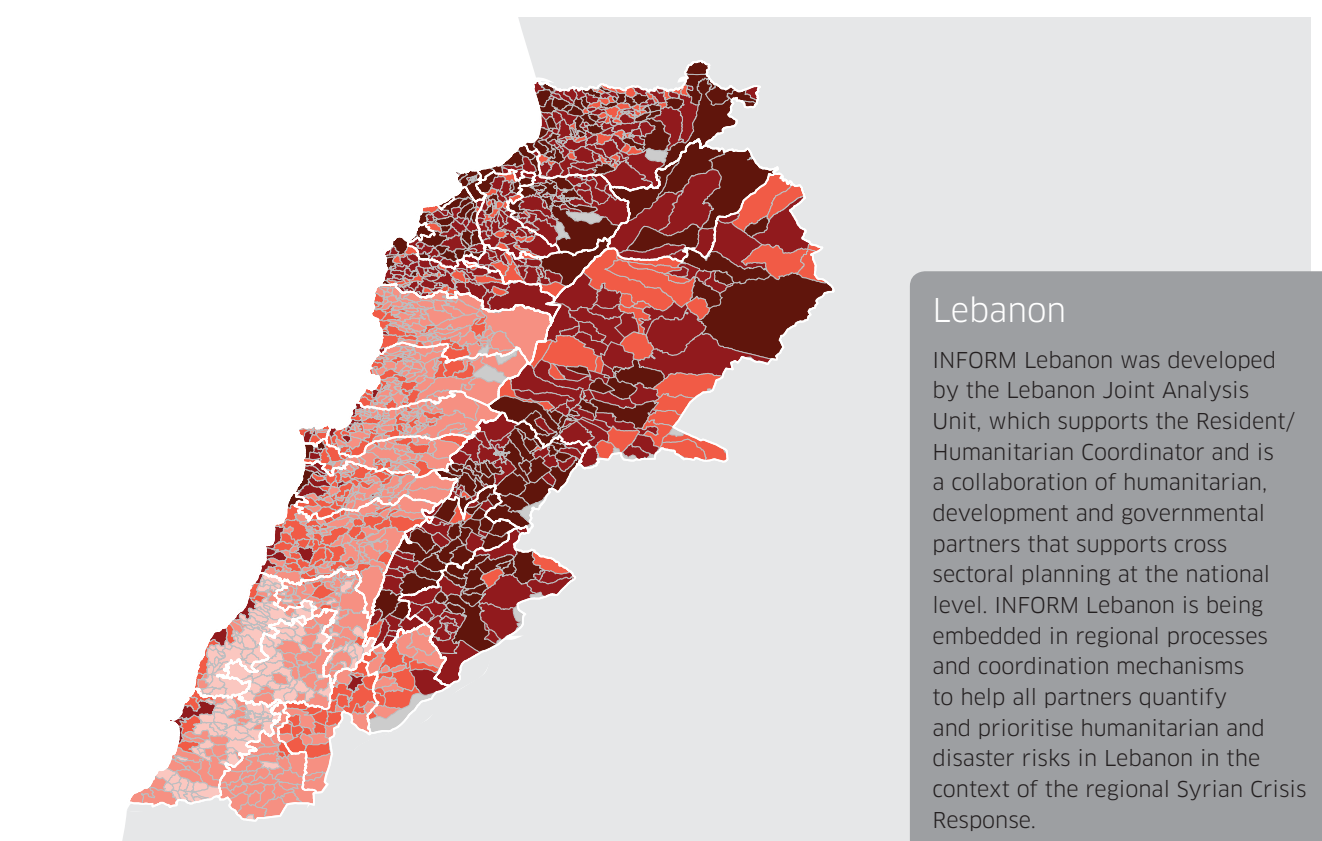
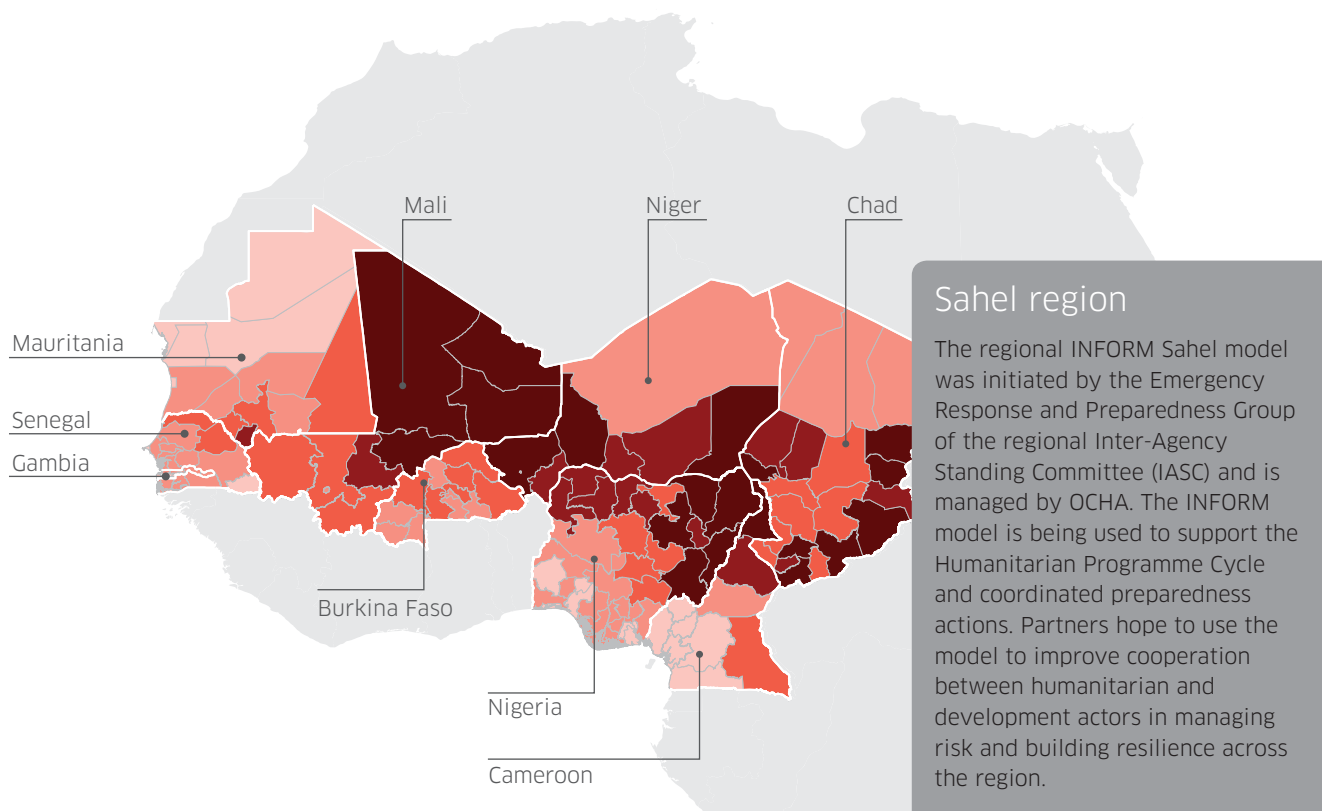
These uses can lead to better outcomes for institutions and people facing crisis and disaster risk.

FIGURE 3
Using INFORM Subnational

Some examples of how
INFORM Subnational
models are being used.

FIGURE 4
Examples of INFORM
Subnational models





WHO CAN DEVELOP AND USE AN INFORM SUBNATIONAL MODEL?



The development of an INFORM Subnational model is initiated and lead by local or regional actors. In other words, by one or a coalition of actors working to manage the risk of humanitarian crises and disasters, or to plan for risk-informed development. They could be from government, intergovernmental organisations, non-governmental organisations or any other relevant group. For example, the development of INFORM Subnational models so far has been led by regional organisations, UN Resident Coordinators and partnerships of UN agencies. A key part of the development process is consultation and collaboration with many different actors, so many organisations can contribute to the process and benefit from the outcomes.

All the results of any INFORM model are open-source. Therefore, anyone can access and use an INFORM Subnational model, from governments to civil society groups and even concerned citizens. The methodology used to develop INFORM is also flexible, so INFORM Subnational models can be adapted by individual organisations and users for their own specific needs.

FIGURE 5
INFORM
Subnational
users

DEVELOPING AN INFORM SUBNATIONAL MODEL

HOW IT WORKS

The development of an INFORM Subnational model is a locally owned and managed process that is supported by the global INFORM initiative. The basic process involves taking the conceptual framework used to measure risk in the global INFORM model, adapting it to the local context and identifying existing subnational level data to measure risk.

The local lead organisation/s and partners are responsible for managing the development process and ultimately for owning, maintaining and using the model. The global INFORM initiative provides guidance, technical support and tools, especially during the development phase. It validates the Subnational model to ensure it complies with global standards.

Many major international humanitarian and development organisations are part of the INFORM initiative at the global level and can therefore leverage and support the participation of their local counterparts in the development process.

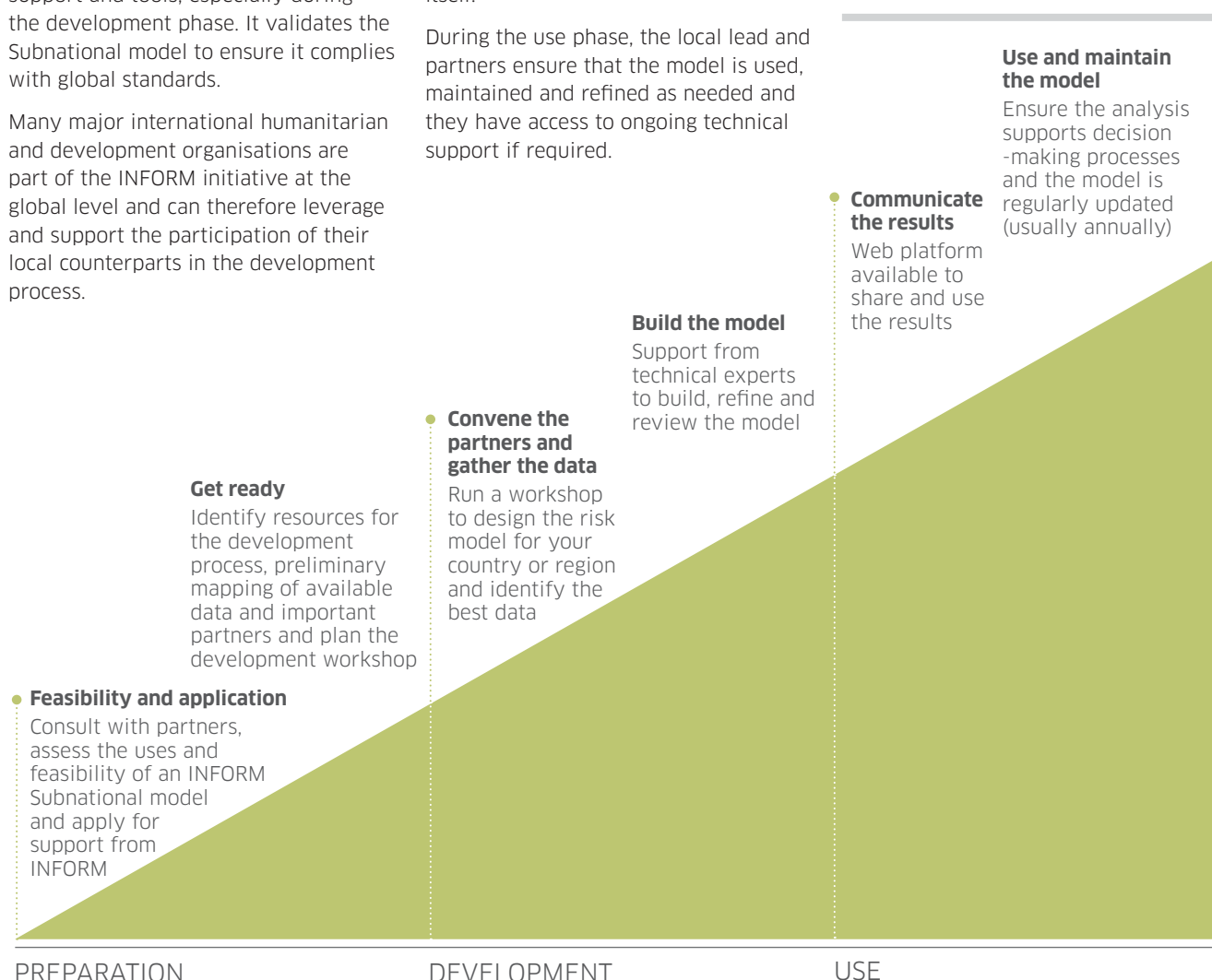
THE PROCESS

The development process broadly consists of a preparation phase, a development phase and a use phase. During the preparation phase, the local lead works with partners to assess feasibility, build support and identify resources for the development of the model.

The development phase consists of identifying the most important risks to include in the model and the data available for measuring them through a workshop and follow-up research. Help is available during this phase and the global INFORM initiative will provide technical support to build the model itself.

During the use phase, the local lead and partners ensure that the model is used, maintained and refined as needed and they have access to ongoing technical support if required.

FIGURE 6
INFORM
Subnational
Process



ROLES AND RESPONSIBILITIES

All INFORM models are intended to be sustainable and regularly updated, rather than a one-off analysis. This is the joint responsibility of the local lead organisation/s and the INFORM global initiative.

The local lead is responsible for initiating and managing the development process at the regional or national level, including:

1. consultation with relevant partners;
2. ensuring the required resources are in place to develop and maintain the model;
3. making contacts with any local data providers; and
4. making sure the model is communicated and effectively used.

The global INFORM initiative will provide coordination and technical support. This includes:

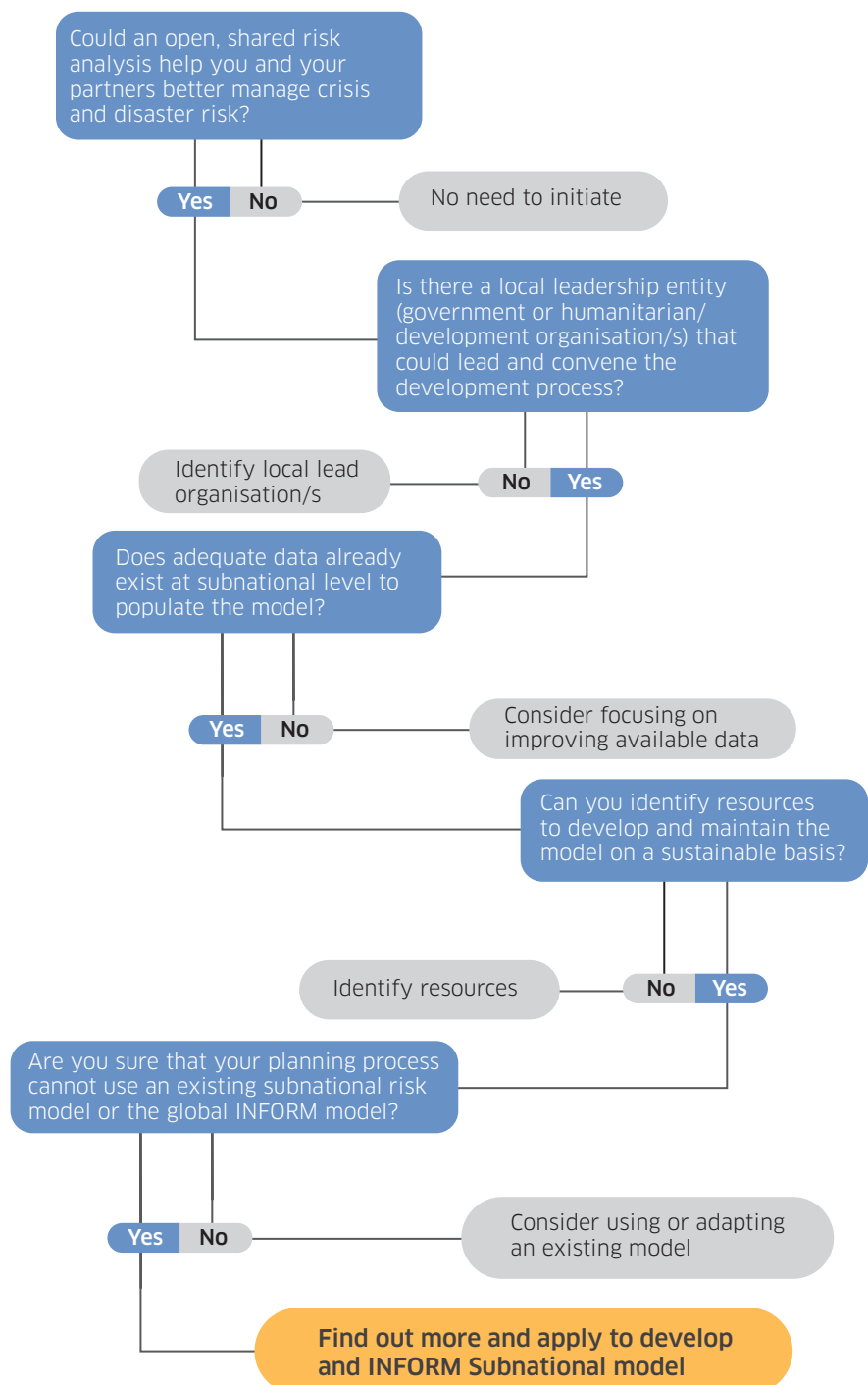
1. guidance on the development process;
2. access to trained experts to support the development process locally;
3. technical support during the development of the model itself and as required during the maintenance phase;
4. validation of the model according to global standards; and
5. access to tools for updating, sharing and visualising the model results.

RESOURCES

The local lead is responsible for direct costs in developing and maintain the Subnational model. This primarily consists of staff or contractor time for managing the development process. Some organisations may have staff that can carry out this role. However, most will want to hire a contractor to support with the initial development. INFORM can provide access to a pool of trained consultants for this purpose. The local lead contracts them directly, normally for a total of around 30 days. Maintenance can usually be covered by regular staff.

All costs associated with support from the global INFORM initiative are covered by INFORM partners.

FIGURE 7
INFORM Subnational
decision tree



GETTING STARTED

Starting the INFORM Subnational development process is simple. For further information, consult the detailed technical guidance or contact INFORM:

contact@inform-index.org

Then fill out an application form, available on the INFORM website:

www.inform-index.org



INFORM is a collaboration of the Inter-Agency Standing Committee Task Team for Preparedness and Resilience and the European Commission. INFORM partners include:



Other INFORM partners are welcome. Partners commit to do one or more of:

- 1) facilitate the use of their data in INFORM,
- 2) provide expert guidance for the INFORM initiative,
- 3) provide in-kind or financial support.

For more information, go to www.inform-index.org.

Note: The geographical boundaries and names shown and the designations used in this report are not warranted to be error free nor do they necessarily imply official endorsement or acceptance by INFORM or any INFORM partner organisation. Every effort has been made to ensure the accuracy of the information contained in this report. All information was believed to be correct as of November 2015. Please check www.inform-index.org for the latest results.